



Enterprise VMS
for End Users

VIDEOINSIGHT®

Trusted by over 25,000 customers worldwide

Today, many IP Video Management Software products have been designed with unnecessary complexity and a bloated infrastructure – and cost way too much to own! Video Insight brings an affordable, easy-to-use Video Management System that delivers full situational awareness and indisputable detail, reducing investigation time and allowing you to provide superior overall protection.

This powerful VMS solution captures, manages, and stores video surveillance across a network – on a single or multiple locations – and supports one of the broadest range of IP and analog camera models. Video Insight is the perfect solution for multi-facility configurations including K-12 schools, universities, hospitals, healthcare providers, law enforcement, and SMBs in need of a powerful yet easy-to-use software.

Grow and scale your system without limitations

Video Insight is an intuitive and robust video management software like no other. Our powerful VMS supports an unlimited number of client workstations, users, simple integration with legacy systems, detailed management system, and more. Add one – or hundreds – of cameras anywhere on the network or across the entire organization, regardless of geographic boundaries.

Lower entry to video surveillance market

Affordability, flexibility and a simple licensing model are what sets Video Insight apart from the rest – we provide the most cost-effective VMS solution on the market and are the easiest to work with.

Video Insight v6 allows end users to receive a perpetual license that includes a wide range of enterprise features – all included without any hidden fees.

UNLIMITED License for Select Panasonic Cameras

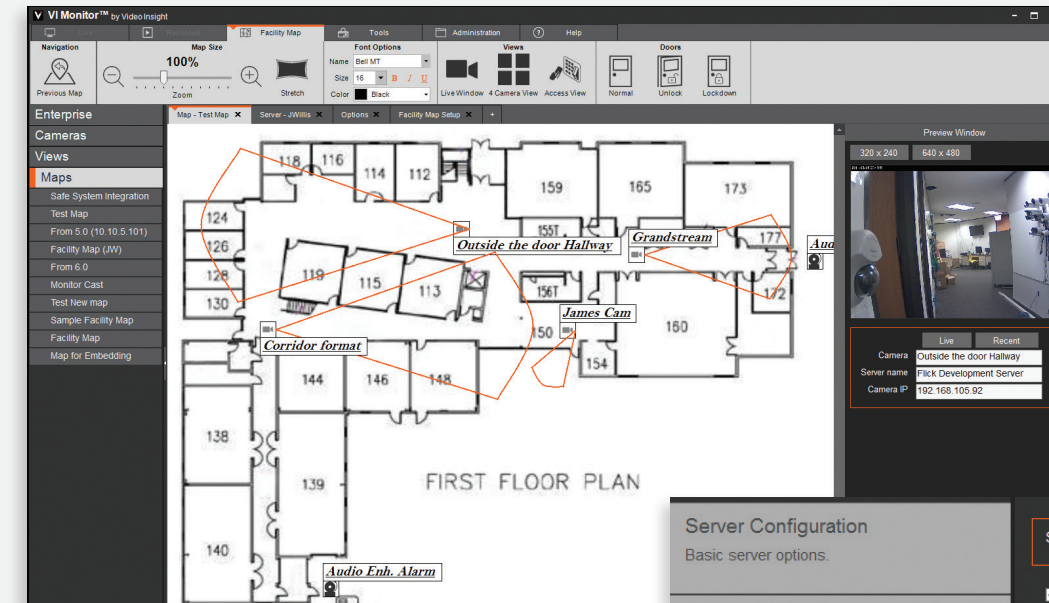
A Video Insight software license is available with the purchase of select Panasonic cameras manufactured after October 2014 to save security professionals valuable time and money.

Ensure your customer is always Up and protected

Maximize protection with redundant recording to multiple Network Video Recorders (NVRs). Health Monitor, Automated failover and easy to use load balancing allows migration of cameras between servers. All of these features can provide high system availability for both live and recorded video at all times. User-access privileges and security features ensure that your video, data, and audio aren't tampered with and are always protected.

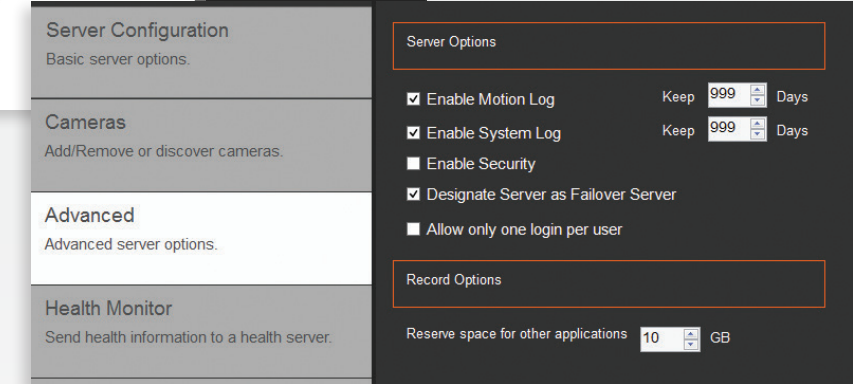
Support

Customers can take advantage of Panasonic's toll-free, 24/7 technical support with hold times less than one minute by calling **1.800.528.6747**.



Facility Maps

Now Includes Unlimited License for Select Panasonic Cameras and Encoders.*



Simple Camera and Server Configuration

Key Product Features

Simple Camera and Server Installation

Video Insight simplifies complex network configurations and setup by automatically identifying cameras on the network – eliminating the need for manual configuration or searching.

Motion Detection

Detects and determines the presence of motion in a video tile. Configure and specify the level of motion required to trigger an event or archiving.

Remote Viewing

Powerful video surveillance features – even when you're on the go. View full resolution live and recorded images from any server on Apple and Android devices with VI Mobile. Email full resolution snapshots, view predefined camera layouts and import all servers and cameras.

Facility Maps

Allows you to upload any type of image of your buildings and then place camera icons on the map representing camera placement. Hover over the icon to see a live image. This feature supports multiple layers of maps that can link to one another, creating a graphical hierarchy.

Alert Monitoring

Rules Manager provides a step-by-step wizard to monitor for scheduled events that trigger one or multiple actions. These can be simple snapshot emails on motion during specific time frames or complex multi-step trigger and action (Such as calling campus security).

Centralized Deployments

Video Insight supports distributed or centralized deployments. When using a centralized server, multiple locations can share a server, maximizing the hardware and reducing the upfront cost and maintenance over time.

Active Directory Integration

Assign camera permission to Active Directory users and groups ensuring proper access rights and single sign-on capabilities. As users come and go, the video system administrators do not have to worry about updates because they are automatically inherited from the AD.

Low Bandwidth Options

Save bandwidth with dual stream configurations that allow users to view groups of cameras in low resolution and switch to high resolution in full screen. Allows users in remote locations to view live and recorded video feed without significant impact to the network.

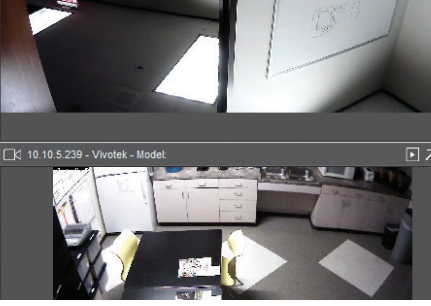
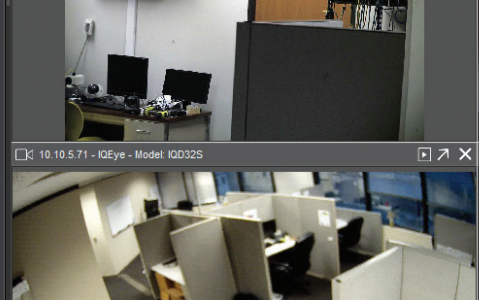
Flexible Storage Options

Video Insight v5.5 supports all types of storage including local, direct attached, NAS and SAN. This provides the flexibility to store recorded video to a single location or to any number of devices simultaneously. This flexibility allows users to keep some recordings for a longer period of time.

Software Development Kit (SDK)

Provides the ability for third-party software developers to embed live and recorded into their applications or create triggers for the Video Insight Server.

10.10.6.3 - ACTI - Model:
10.10.6.4 - ACTI - Model:
10.10.6.5 - ACTI - Model:
10.10.6.6 - ACTI - Model:
10.10.6.7 - ACTI - Model:
10.10.6.8 - ACTI - Model:
10.10.6.10 - ACTI - Model:
10.10.6.11 - ACTI - Model:
10.10.6.12 - ACTI - Model:
10.10.6.13 - ACTI - Model:
10.10.6.14 - ACTI - Model:
10.10.6.15 - ACTI - Model:
10.10.6.17 - ACTI - Model:
10.10.6.19 - ACTI - Model:
10.10.6.20 - ACTI - Model:
10.10.6.21 - ACTI - Model:
10.10.6.22 - ACTI - Model:



Panasonic



Additional Features and Technical Specifications

User Interface

- Intuitive and powerful
- Requires little or no end user training
- Quick search tool for cameras

Live and Recorded Monitoring

- Intuitive access to live and recorded video from any camera in system regardless of location
- Unlimited users
- Create customized layouts and layout groups
- Digital Zoom on any image
- PTZ control options including on screen overlay commands, left navigation control and pop-up menu options
- Picture in Picture of zoomed area
- 180 Degree stitched layouts
- PTZ control with USB Joysticks
- Panoramic/360 dewarped support
- Synchronized Playback

Alert Management

- Pop-up live windows of alarmed cameras
- Red outline in camera layout on alarm conditions
- Alerts can be directed to specific users or groups
- Email or send text message of JPEG or AVI clip
- Pop-up window with detailed instructions for operator
- Alarm actions include changing displays, executing DIO commands displaying instant replay, pushing image to video wall, cycle spot monitor, move PTZ to presets, change recording options and record with audio
- Using Analytic Tripwire, count people entering and exiting facility to keep running total and alert if threshold exceeded

Camera Support

- Deep integration for over 3,000 camera models from 100 manufacturers. Check our website for the complete list
- Universal camera driver provides support for most other cameras via ONVIF, RTSP or HTTP
- Advanced camera features from Axis, Panasonic, IQeye, Sony, Sentry 360, Scallop and ImmerVision
- Resolutions up to 20 Megapixels
- MJPEG, MPEG4, H.264 Compressions
- Multistreaming
- Camera or server side motion detection
- Support for sensitivity and privacy zones
- Camera auto discovery
- Centralized camera management
- Audio inputs and outputs
- Combine audio and video from two independent sources
- Send live video to Axis Decoders
- Trigger Digital Inputs and Outputs
- Support for Axis DIO and Audio device

Licensing

- Unlimited license for select Panasonic cameras
- Licensing in single camera increments
- No base or server fees
- No individual camera MAC address registration
- No extra licensing costs for client applications
- Virtual cameras require only a single license
- Multi-stream connections only require one license
- Arecont 180° and 360° cameras require only a single license

Technology

- Robust scalable Pure 64-bit design
- Developed in open technologies
- Automated failover support
- Load Balancing
- Easy integration with 3rd party application
- Server software runs as a Windows Service
- Clients can connect to a single IP address to access the entire system
- Servers are connected to cameras and clients are connected to the servers. Clients do not connect directly to cameras.
- Email support for SSL and alternate ports, supporting Gmail and Hotmail SSL certificates for secure web client transmissions
- Execute programs or batch files on triggered event

Storage

- Flexible high speed storage design with no limits
- Support for internal and external storage devices including NAS and SAN
- Support for COLDSTORE
- Long Term Storage for recorded video file management
- Moves recorded video from a single or multiple cameras or servers on a schedule basis

System Requirements

- OS Compatibility 32- and 64-bit versions of Windows XP, 7, 8, Server 2003, 2008R2, and 2012
- Virtualization support for VMware, Hyper-V and Xen
- Memory and CPU requirements are affected by number of cameras, resolution, FPS, and motion-based recording. Visit website for sample configurations.